

Social Recovery Taskforce
27th January 2022 at 14:00
Via Microsoft Teams

AGENDA

1. Welcome, Introductions and Apologies
Chair
2. Minute of Previous Meeting
Chair Attached
3. Workstream Recommendations
Matthew Barrett
4. Community Action Plan
Bernadette Monaghan/Matthew Barrett
5. Community Action Plan and Climate Change
Sonia Milne Attached
6. Disproportionate Impacts of the Pandemic on BAME Populations
Chris Harkins Verbal
7. Thank you and Close

OFFICIAL

MINUTES

Social Recovery Task Force
5th November 2021, at 14:00
via Microsoft Teams

Present:

Councillor Jennifer Layden (Chair), Glasgow City Council Councillor Richard Bell, Glasgow City Council; Kirsti Hay, GCC, Violence Against Women; Bernadette Monaghan, GCC, Community Empowerment Services; Anne Fehilly, GCC, Violence Against Women; Dawn Fyfe, Glasgow Women's Voluntary Sector Network; Tressa Burke, Glasgow Disability Alliance; Andrew Olney, Glasgow Life; Fiona Moss, NHSGGC; Des McNulty, Academic Advisory Group; Paul Buchanan, Glasgow Colleges Regional Board; Gary Dover, Glasgow City Health & Social Care Partnership; Ian Bruce, Glasgow Third Sector Interface; Chris Harkins, Glasgow Centre for Population Health; David Maxwell, Volunteer Glasgow; Tom Berry, Volunteer Glasgow; David Leonard; Tom Jackson, GCC Glasgow Community Justice; Jatin Haria, BAME Representative; Irene Cree, Glasgow Life; Afton Hill, GCC Strategic Policy; Valerie McNeice, GCC Economic Taskforce Representative

In attendance:

Helen Hunter, GCC, Community Empowerment Services; Matthew Barrett, GCC Community Empowerment Services; Bruce Whyte, GCPH; Katharine Simpson, GCPH; Amy Rew, Glasgow Girls Club; Elena Soper, YWCA; Holly Bruce, YWCA; Astrid Smullenbroek, YWCA; Matthew Barratt, GCC Community Empowerment Services

Apologies:

Alex MacLean, GCC, Neighbourhoods, Regeneration & Sustainability (Corporate Asset Management); Vicky Bond, GCC Chief Executive Department; Gary I'Anson, Police Scotland; Louise McKenzie, GCC Strategic Policy; Mike McInally, GCC Economic Development.

1. Welcome, Introductions and Apologies

The Chair welcomed everyone to the meeting and apologies were given.

2. Minute of Previous Meeting

No amendments were requested, and the minute was approved.

3. Workstream Updates

John invited each of the workstream leaders to give an update.

Mental Health (Fiona Moss)

A lot going on in the mental health programme, Flourish Glasgow Partnership continuing to meet. Scottish Government Community Mental Health Fund will be dispersed through TSI.

Third Sector – (Ian Bruce)

Community Mental Health Fund needs to be allocated by 31st March 2022. Now have membership from public sector and have a proposed date for the first joint meeting. Will be closing engagement on the original review document.

OFFICIAL

OFFICIAL

BME (Jatin Haria)

BME task force have met with PMGC. Not made contact with the other workstreams but hope to do so soon. Plan to get a presentation from GCPH on their micro briefings for BME communities at next meeting.

Disabled Communities (Tressa Burke)

Have sent out invitations to the relevant Senior Management Team and Leadership teams within Social Work Adult Services to attend a journey mapping session with DPO network led by GDA. Have also had a meeting with DPO network for a collaborate sense checking of participation report. Poverty and work report writing is underway. Have the Listening and learning sessions scheduled to take place within next 4 weeks.

Violence Against Women (Kirsti Hay)

Family support project 'Making a House a Home' has been monitored and reviewed, will be considering making cash payments by start on next year. 10 questions have been submitted around partners and hopeful they will be signed off at next meeting on 25th November. Now working in partnership with the Women's Workstream to look and developing a gendered lens. Online scoping report is now in final draft. Hoping to have the impact assessment brief, exploring the impact of covid for women during the pandemic ready for next meeting.

Child Poverty (Fiona Moss)

Challenge Child Poverty Partnership continues to meet, a co-ordinator post is being recruited to provide support. Tender is now live for Welfare Advice and Health Partnerships. Research initiative 'Cutting the Costs' is looking at findings, 3 areas needing reform; social security, reduce costs and improve roots into good work.

Des added he will be having a meeting with members of the Academic Advisory Group within next few weeks who may be able to help take some work forward. He extended an invite to Fiona to come along. He also suggested talking to Jay from Health Board who is also working on Child Poverty.

Kirsti asked to catch up with Fiona off table to make links with Violence Against Women and Child poverty. Fiona agreed.

Volunteering (Tom)

Has been hold up expediting elected councillors joining Volunteering Strategy Board. Communication group continue to meet.

Bernadette added that discussions are happening in house for protocols around councillors being involved in external Boards.

Women's Workstream (Bernadette Monaghan/Dawn Fyfe)

Group is coming together well and have had some good discussions. Fiona Moss attended last meeting to give an update on Flourish Glasgow which generated a lot of discussion. Parent Network Scotland also gave an update. Have a standard item around planning an event to coincide with International Women's Day. Discussion happening around quality impact Assessments, Community Action Plan is on agenda for next meeting in December.

Dawn added that there had also been discussion around what an essential worker is. GWVSN presented at the last meeting and brought forward information to look at where essential work is needed for women. Was apparent that there needs to be more support for women's needs and look at what essential work is. Also been working on the 10 questions will feedback at next meeting.

OFFICIAL

OFFICIAL

4. Glasgow Life's Live Well Project

Andrew Olney gave a brief introduction to Live Well Project. Irene Cree gave a presentation on the Community Referral Model and covered the following points:

- Community Referral Model
- Strategic Overview including alignment to priorities
- Framework LWCR Overview
- Programme Management Components
 - Empowering communities
 - Relationship management
 - Monitor and Evaluate
 - Volunteer Management
 - Training and Development
- Citizen Facing Components
 - Needs assessment
 - Culture and port activity
 - Sign post
 - Support
- Tams Journey
- Community Referral Theory - Driver Diagram
- Improved Operation – your one point of contact
- Strategic approach – the benefits
- Next steps and actions

The Chair thanked Irene for her presentation and opened for questions and comments.

Gary asked what scale of people they were hoping to take on and if the team would be based in the localities. Irene advised there will be a pilot running for 6-9 months which will help give an indication of the demand. It is anticipated the number of referrals will be greater than 4000. She added that there will be a centralised team with locality knowledge working on it.

Tressa was thoughtful about how much work was involved and asked if they had considered that part of the work may become a community navigator role which may result in them becoming a range of case workers.

Andrew was conscious there is a lot of people working within the community needing supported. Need to think about how they best work with Glasgow Life and if additional skills are needed.

John added that iVPD unit will be changing in the near future. He suggested a connection with Police Scotland may be helpful and extended an offer to engage.

Andrew welcome the engagement offer and agreed to make contact offline.

Shaw observed the philosophy of the project was welcome, but had concerns the potential scale and complexity of taking it forward may be difficult.

OFFICIAL

OFFICIAL

5. Health in a Changing City

Bruce and Katharine gave a presentation on Health in a Changing City and covered the following points were covered:

- Infographics
- Glasgow: a changing city
- Widening Health Inequalities - Female Life Expectancy
- Our recommendations
- Gendered Violence and personal safety and recommendations
- Ethnic Inequalities and Racism
- Disability
- Children and Young People
- Housing and Homelessness
- Poverty and Economy
- Places and Greenspace
- Transport and Travel
- Dissemination
- Questions
 - Are the policy recommendation clear?
 - How can some of these recommendations be taken forward?
 - How will you use the recommendations and findings within your own organisation?

The Chair thanked Bruce and Katharine for their presentation and opened up for questions and comments.

Anne commented that the presentation heightened what the VAG and Women's workstreams were currently looking at in terms of event planning. The Chair suggested the presentation be given to the GWVAG Partnership.

Fiona commented on how the work could be supplemented with the local data already there and there may be some under representation of the national statistics. Bruce confirmed he would be happy to make use of the data already collated.

Tressa made a similar point around disability statistics and suggested it may be more helpful to meet up to align what's coming out of Disability workstream? Bruce agreed to meet with Tressa.

Des asked what are the most effective things that could be done now to assess interventions or identify what would be impactful? Bruce advised that although they already had a lot of recommendations, the one recommendation to highlight would be that there is action needed at a UK and Scottish Government level to address structural inequalities.

David noted that it would be good to catch up in relation to the social capital recommendations. Bruce agreed to meet.

6. Young Women Lead Programme

Elena gave an overview of the Young Women's Lead Programme. Holly and Astrid gave a presentation to the group and covered the following points:

OFFICIAL

OFFICIAL

- Introduction to report
 - Why feminist urbanism
 - Covid 19 and the death of Sarah Everard and Sabina Nessa
 - Response to the report
- The research
 - 2 working groups established
 - Created survey based on research
 - Shared survey via
 - Online Community Groups
 - Social Media
 - QR Stickers
 - Once data collected it was analysed
- The Results
 - Buses – 293 responses
 - Majority of respondents:
 - Heterosexual
 - Aged 23-29
 - White Scottish
 - Cisgender
 - Had no religion
- Bus Survey Findings
- Safety
- Affordability and reliability
- Accessibility
- Recommendations
- The results
 - Parks 290 responses
 - Majority of respondents
 - Heterosexual
 - Aged 23-29
 - White Scottish
 - Cisgender
 - Had no religion
- Park survey findings
- Safety
- Dogs in Parks
- Provision of public toilets
- Recommendations
- Benefits of recommendations
 - Lower crime
 - Increase mobility
 - Improve Quality of Life
 - Improve Public Realm

The Chair thanked Elena, Holly and Astrid for their presentation and opened for questions and comments.

OFFICIAL

OFFICIAL

Amy commented that it would be good to connect with some of the work of the Glasgow Girls Club.

Kirsti observed how it links into women using wider public spaces. She added that work is needing done on women using outdoor space.

Bernadette added it would be good to connect the work into the Women's workstream. She suggested using the Women's workstream event (scheduled to take place on International Women's day) to look back and see what recommendations had been addressed and what ones were more challenging.

Elena welcomed making the connections and added her contact email address in the group chat.

7. Let's Get Connected Community App

In the absence of Sophie Thomson, Tom Jackson gave an overview of the Partnership between Community Justice Glasgow and the Glasgow Girls Club, he introduced Amy Rew from the Glasgow Girls Club to brief members of the Let's Get Connected App.

Amy gave members a demonstration of the Let's Get Connected App which is aimed at:

- People working in Community Justice arena - either directly or indirectly
- People with lived experience of the Justice System

She highlighted the wider city-wide Community Benefits for the App and detailed their vision moving forward which is to:

- Match make – using personal profile building to anonymously auto-match users to services
- Harvest raw data about services - current provision / gaps analysis – things searched for but not available – assist with planning and commissioning etc.

The Chair thanked Amy for her briefing and opened for questions and comments.

David commented that it would be useful to link in existing data to ensure there is no duplication.

Andrew noted the connection with the Glasgow Live Well Project and with library services online information portal for the city.

Amy agreed to meet up offline to make the connections.

8. A.O.B.

The Chair advised that the next meeting in December will be the last meeting of the SRT.

Bernadette informed members she would email each of the individual workstream leads prior to next meeting to look at how the work will continue after the SRT. She noted the importance of reporting and suggested the flash report be kept in place.

9. Meeting Schedule

02/12/2021, 14:00

OFFICIAL



CLIMATE ACTION & COMMUNITY ACTION PLAN

"To make climate change a democratic, not a technocratic issue."

Democratic Society

- The Intergovernmental panel on Climate Change (IPCC) published a report highlighting urgent need for global action on climate change.
- Glasgow City Council declared a **climate and ecological emergency**.
- Climate Emergency Working group made **61 recommendations**, with a target for the city to achieve **carbon neutrality by the year 2030 at its heart**.

Background



We must :

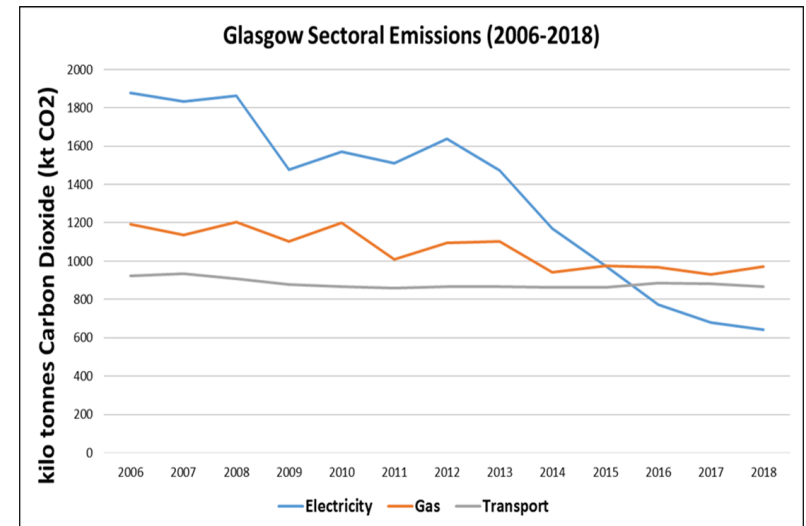
1- Transform the city

2 - Mobilise and involve Glaswegians towards that transformation



CLIMATE PLAN

Challenge for Glasgow



Challenge for Glasgow

What is needed now is a fundamental transformation of economic, social and financial systems that will trigger exponential change in decarbonisation rates and strengthen climate resilience”



The Themes that emerged

- Theme 1 - Communication and Community Empowerment
- Theme 2 - Just and Inclusive Place
- Theme 3 - Well Connected and Thriving City
- Theme 4- Health and Wellbeing
- Theme 5 - Green Recovery



THE GLOBAL GOALS
For Sustainable Development



The 5 Ps of the 2030 Agenda

- **5 inter-dependent dimensions:**
People, Planet,
Prosperity,
Partnerships and
Peace



Good video explaining this! <https://www.millennium-institute.org/isdg>

The Themes that emerged

ENVIRONMENTAL

Green Recovery and Wellbeing

City integrated with nature

Re-wilding

Net zero carbon

SOCIO-CULTURAL

Just Transition

Capacity Building

Collaboration

Innovation

Inclusive indicators

ECONOMIC

Green Deal

Reimagining
buildings and
spaces in the city

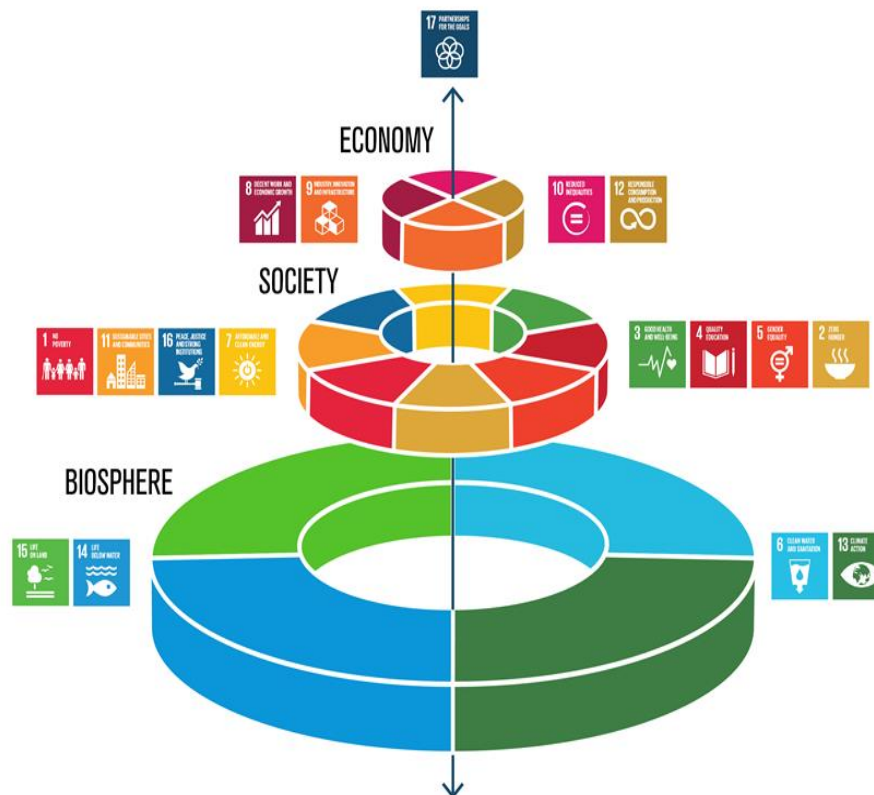
Development
through a co-
benefits, place
based lens

Circularity

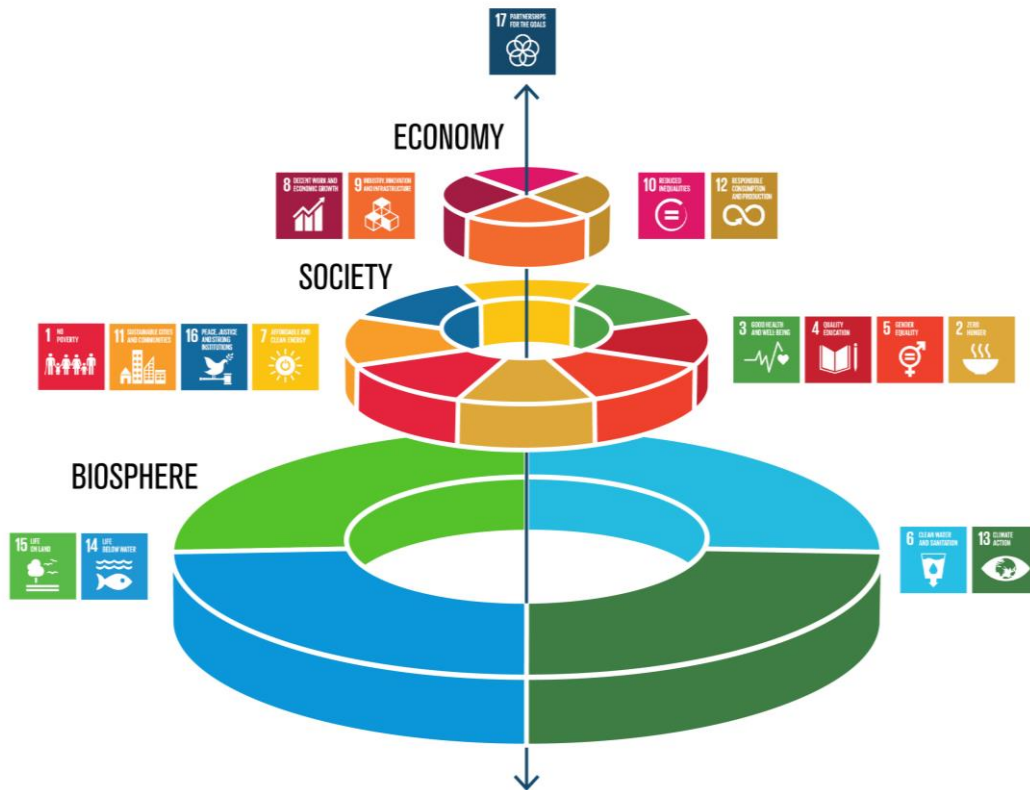
GOVERNANCE

New relationship
between institutions,
**citizens and the
environment.**

Decision making across
social, environmental,
economic dimensions.
Need for creativity and
innovation through
meaningful participation
and collaboration.



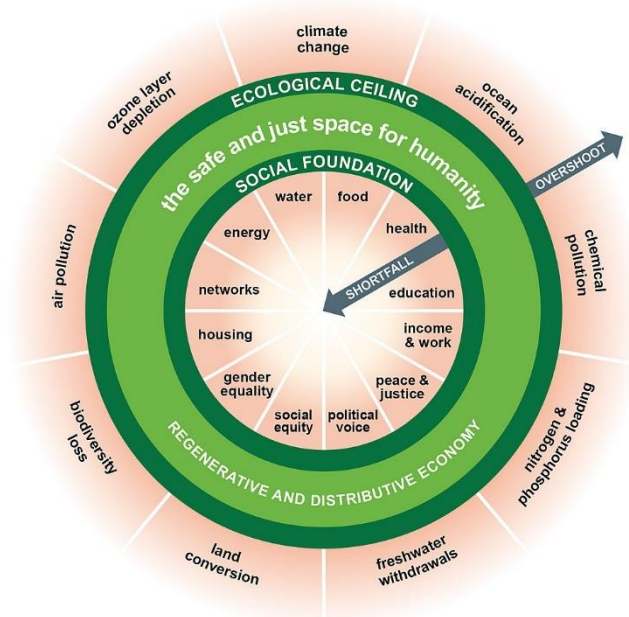
The “wedding cake” model



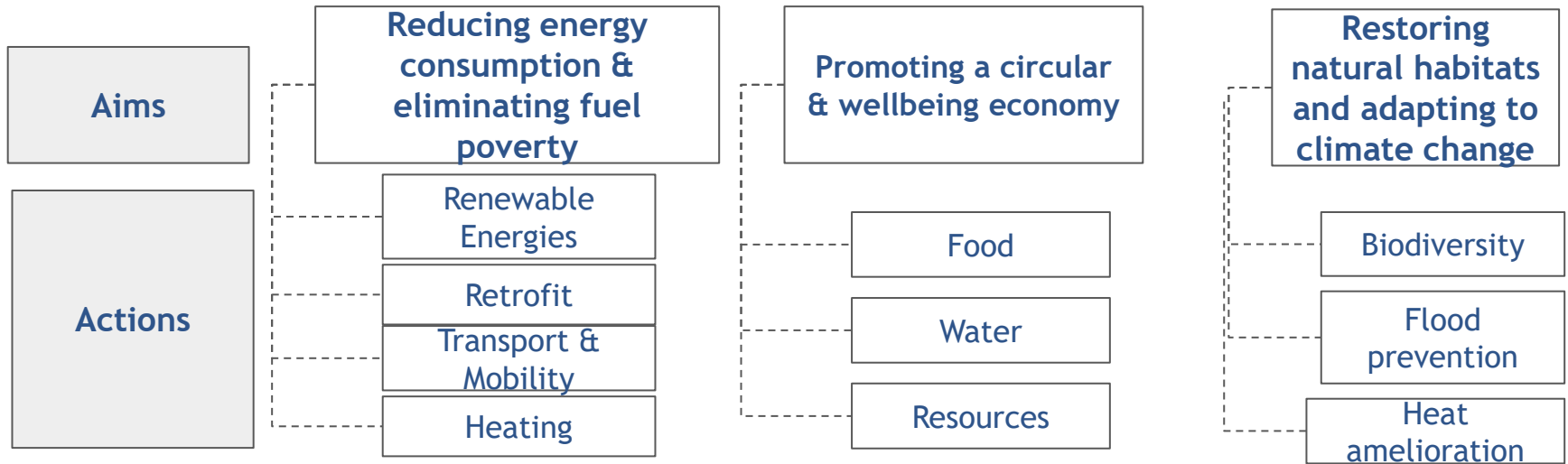
- Essential support systems provided by the earth's biosphere
- All other Systems depend on it
- Planetary boundaries cannot be exceeded

Ecological ceilings and social foundations

- Kate Raworth's Doughnut Economics
- Combining the social and the environmental systems
- The SDGs provide global agreed-upon goals across dimensions



In Summary



This must be participatory.

The plan was based on a collaborative approach internally across silos, but must now open to the world outside the city council...

We must follow the Democratic Society's Climate Model to ensure that the city's ambitious programme to reach carbon neutrality is **co-created, driven and facilitated** through **deep activation of citizens**, communities and stakeholders.

What other CPP have done

Edinburgh
Highlands and Islands
Outer Hebrides



TO CONCLUDE: GLASGOW DEMOCRACY PIONEERS



REHEARSE



PERFORM



DELIBERATE



PROPOSE

Democracy Pioneers Legislative Theatre: What was achieved?

- Creative, accessible way to bring together different voices and perspectives
- Confidence building for youth participants
- Practical policy proposals tested 'in performance'



*“We choose to go to the Moon in this decade and do the other things, **not because they are easy, but because they are hard**, because that goal will serve to organise and measure the best of our energies and skills, because **that challenge is one that we are willing to accept, one we are unwilling to postpone**, and one which we intend to win, and the others, too”.*

— JF Kennedy 1962

THANK YOU!