



OFFICIAL

 PARKHEAD, DALMARLOCH AND CAMLACHIE THRIVING PLACE	PDC Thriving Places Steering Group Wednesday 15th May at 9.30am Barrowfield Community Centre 67 Yate Street	 West of Scotland Housing Association
--	--	--

Agenda

Item Number	Report Title	Presented By
	Apologies	Cllr Greg Hepburn (Chair)
	Disclosure of Interests	Cllr Greg Hepburn (Chair)
1.	Approval of the Minutes of February 2019	Cllr Greg Hepburn (Chair)
2.	Matters Arising	Cllr Greg Hepburn (Chair)
3.	PDC Community Consultation Presentation	Johnny Pickering, GCC Jane Horne, Kelvin College
4.	PDC Youth Enquiry Presentation	Meabh Bradley WSHA Sandra Hendry WSHA
5.	PDC Thriving Places Update	Meabh Bradley, WSHA
6.	PDC Budget Update	Maisie O'Brien, WSHA
7.	HSCP Health and Wellbeing Survey Results	Nichola Brown, HSCP
8.	Locality Planning Update	Derek Speirs, CPP
	A.O.C.B	Cllr Greg Hepburn (Chair)
	Date of Next Meeting – 20th August 2019	Cllr Greg Hepburn (Chair)

OFFICIAL

PARKHEAD, DALMARNOCK, CAMLACHIE THRIVING PLACE

CONSULTATION REPORT

15TH MAY 2019

JANE HORNE

CONSULTATIONS:

- DOOR TO DOOR CONSULTATIONS:

- PARKHEAD
- DALMARNOCK (OLD)
- DALMARNOCK (NEW)
- CAMLACHIE

- 496 CONSULTATIONS

- 3 FOCUS GROUPS

- 4 STAKEHOLDERS

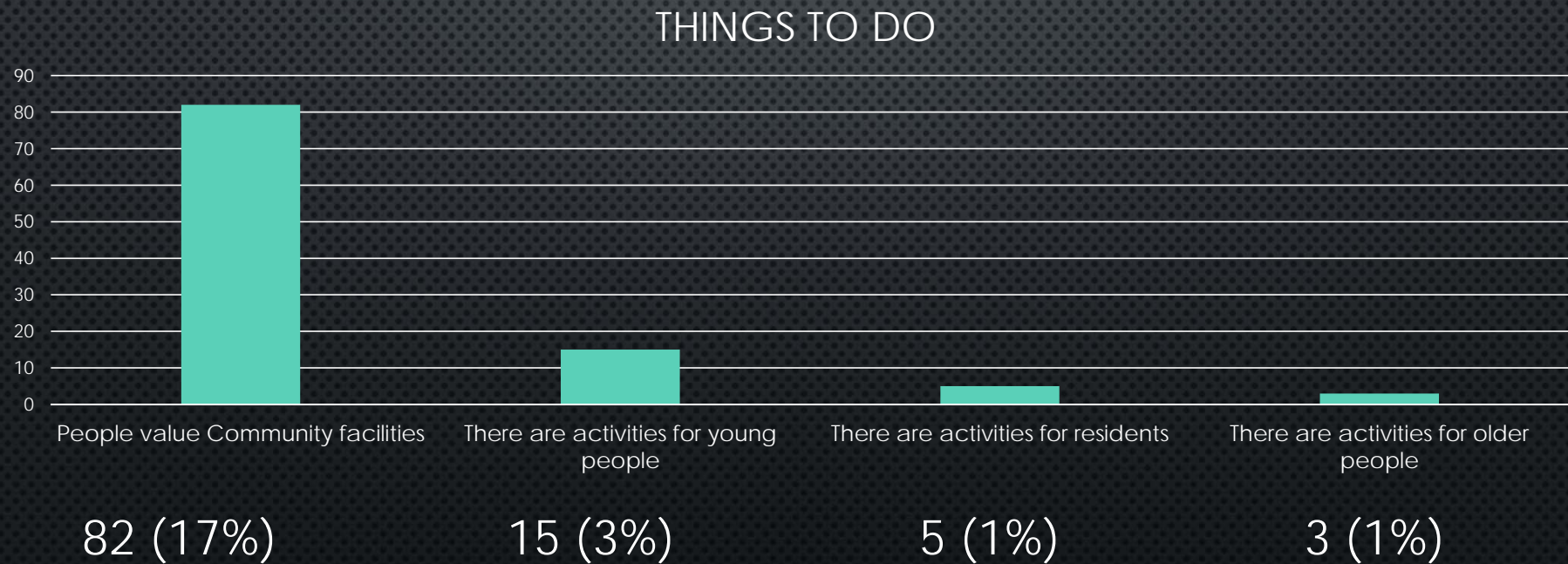
- ON STREET CONSULTATIONS:

- NURSERIES
- SCHOOLS
 - PTA
 - PT COUNCILS
- GLASGOW KELVIN COLLEGE
- COMMUNITY CENTRES
- CHURCHES
- TENANTS' ASSOCIATIONS
- BALTIC STREET PLAYGROUND
- PARKHEAD LIBRARY
- SHOPPING CENTRES
- GIE'S A BREAK
- SIMON COMMUNITY

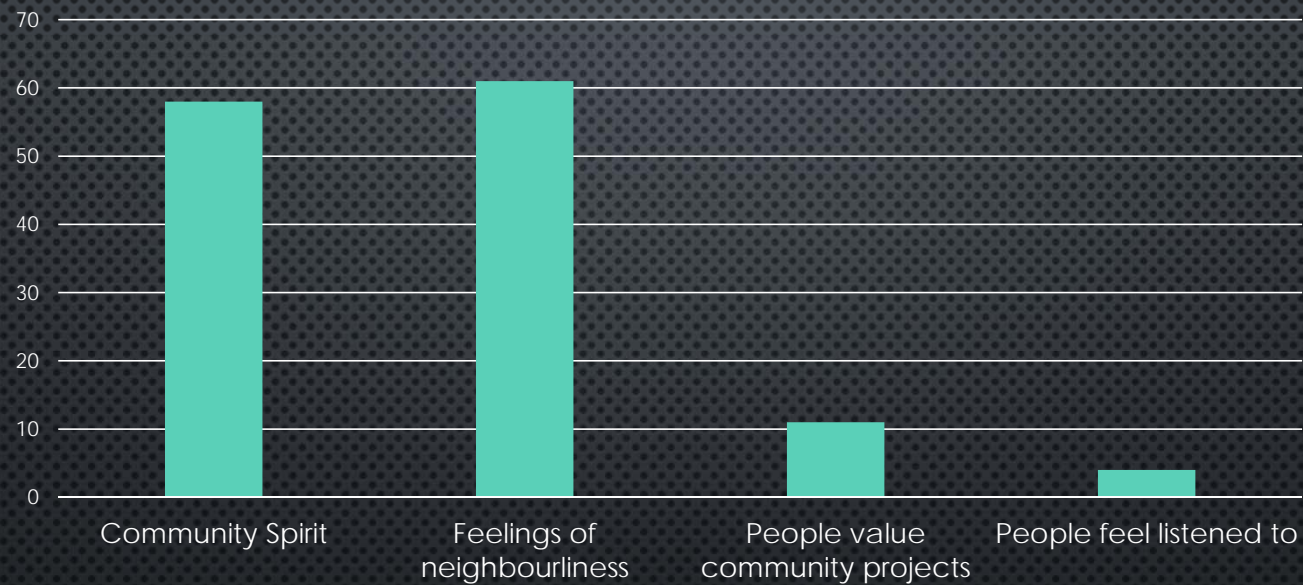
4 QUESTIONS

- WHAT DO YOU SEE AS BEING THE BEST THINGS ABOUT THE LOCAL AREA THE PARTNERS SHOULD BE MAKING SURE WE PROTECT OR DEVELOP? (OF THESE, WHICH IS THE MOST IMPORTANT?)
- WHAT IMPROVEMENTS FOR THE AREA SHOULD THE THRIVING PLACES PARTNERS BE FOCUSSED ON MOST?
- WOULD YOU LIKE TO BE INVOLVED IN DEVELOPING THE LOCAL PLAN SO WE GET IT RIGHT FOR YOU AND OTHER LOCAL PEOPLE
- WOULD YOU BE INTERESTED IN VOLUNTEERING TO HELP WITH LOCAL SERVICES?

WHAT DO YOU SEE AS BEING THE BEST THINGS ABOUT THE LOCAL AREA THE PARTNERS SHOULD BE MAKING SURE WE PROTECT OR DEVELOP? (OF THESE, WHICH IS THE MOST IMPORTANT?)



SENSE OF COMMUNITY



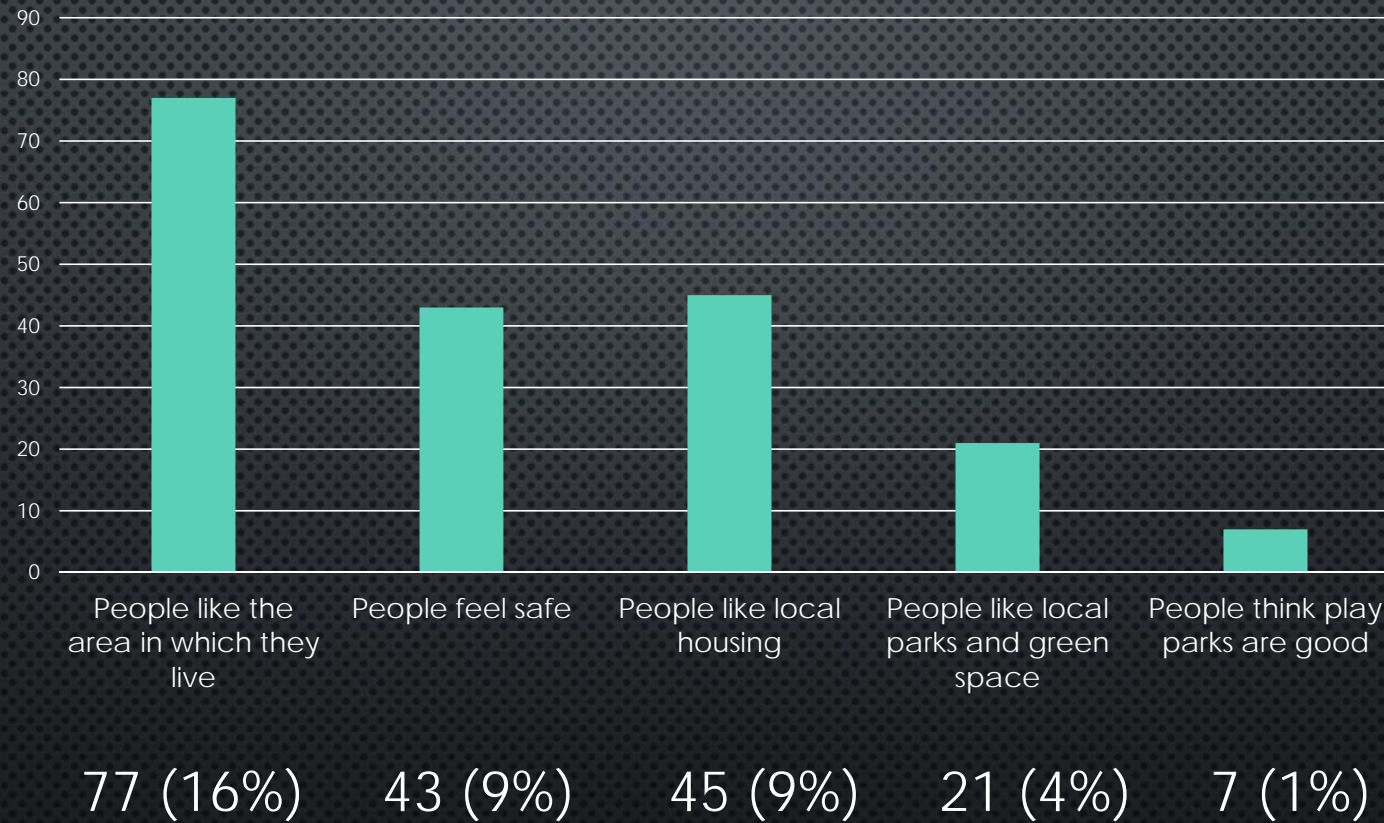
58 (12%)

61 (12%)

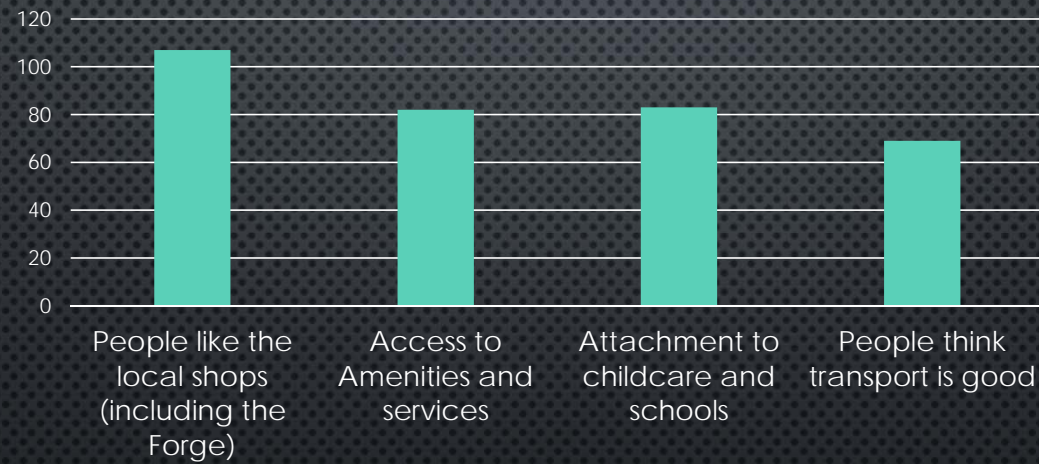
11 (2%)

3 (1%)

Place Attachment



Access to goods and services



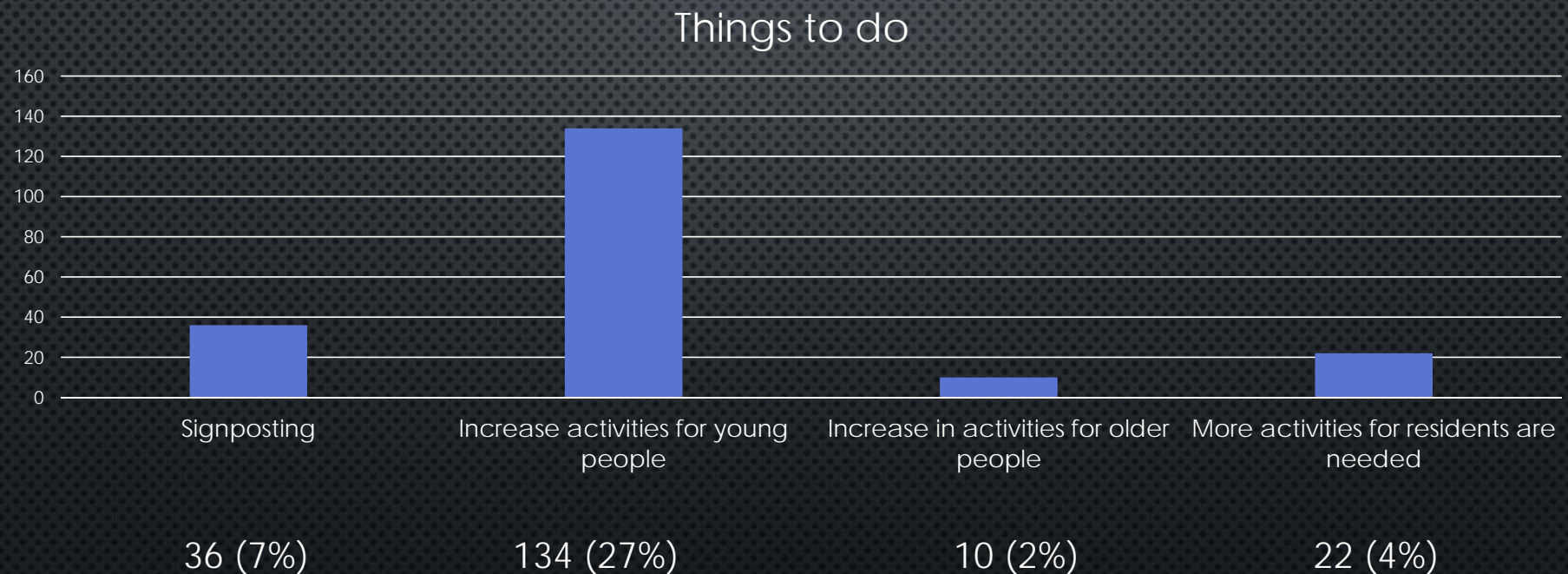
107 (22%)

82 (17%)

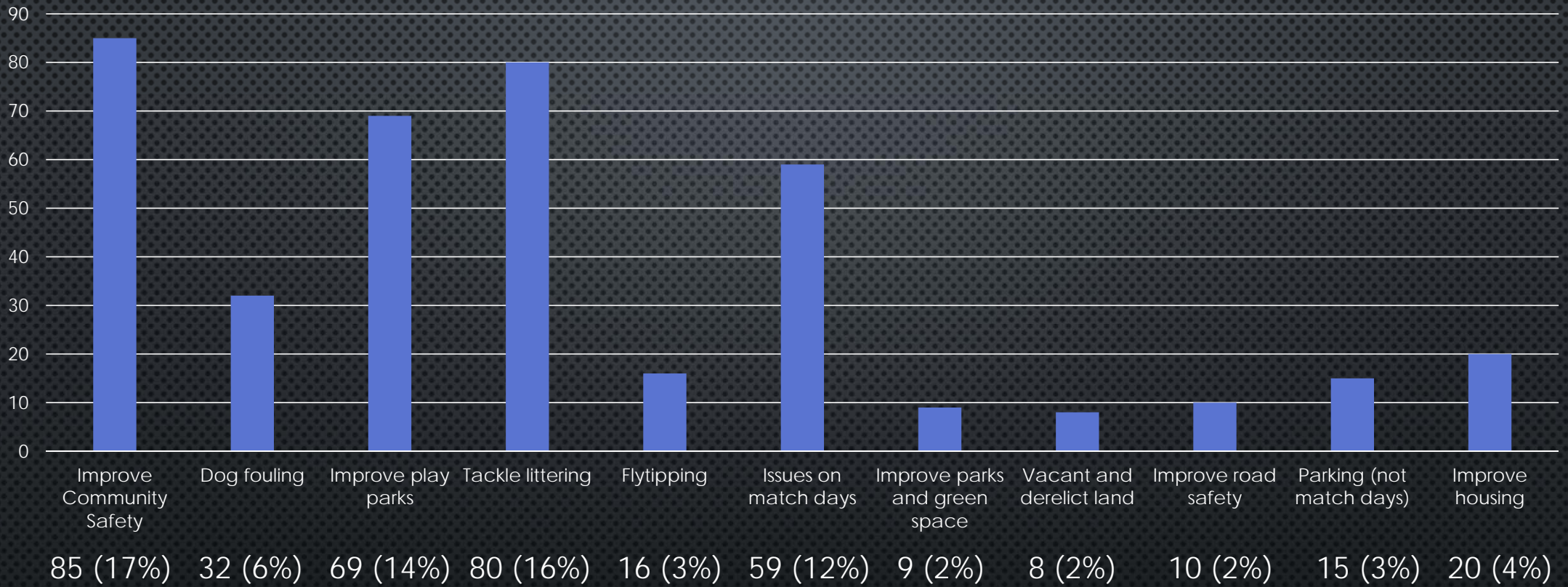
83 (17%)

69 (14%)

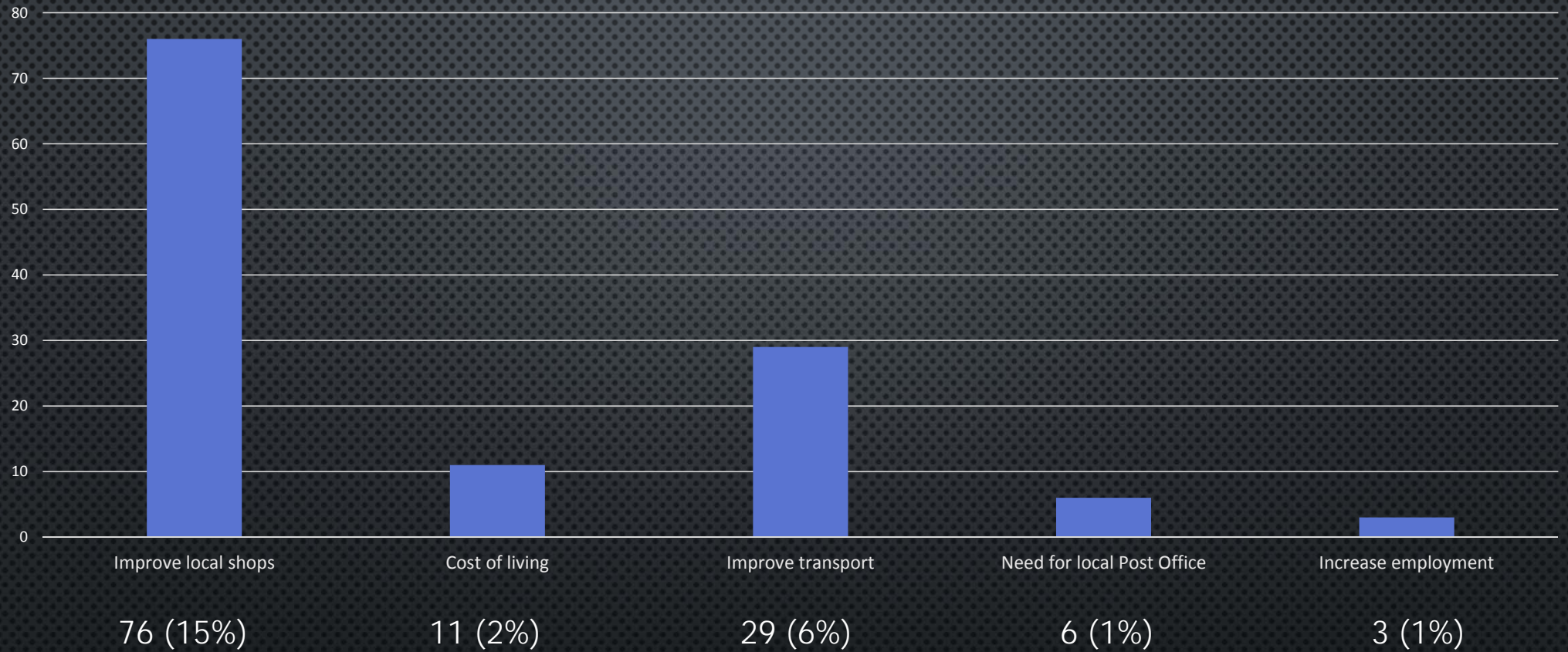
WHAT IMPROVEMENTS FOR THE AREA SHOULD THE THRIVING PLACES PARTNERS BE FOCUSING ON MOST?



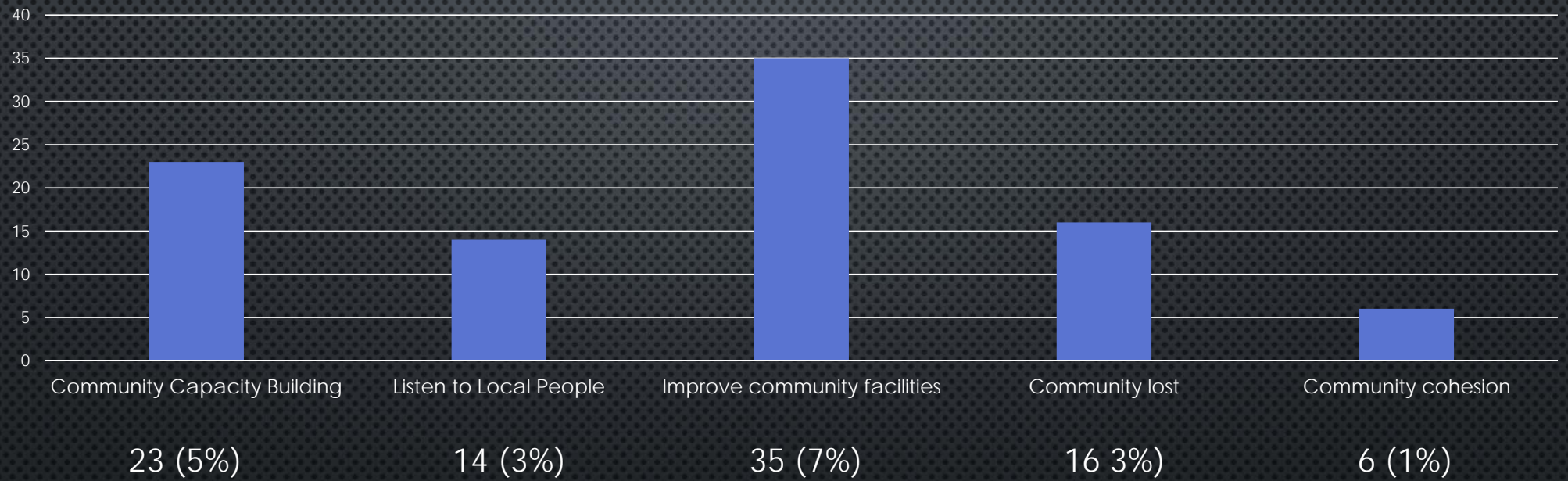
Public Space



Improve Access to Key Goods and Services



Community Development



- **WOULD YOU LIKE TO BE INVOLVED IN DEVELOPING THE LOCAL PLAN SO WE GET IT RIGHT FOR YOU AND OTHER LOCAL PEOPLE?**

- 134 respondents stated that they would like to be involved in developing the local plan

- **WOULD YOU BE INTERESTED IN VOLUNTEERING TO HELP WITH LOCAL SERVICES?**

- 150 respondents stated they would be interested in volunteering to help with local services

RECOMMENDATIONS:

IT IS RECOMMENDED THAT THE STEERING GROUP GIVE CONSIDERATION TO FINDING SOLUTIONS TO THE FOLLOWING:

- THINGS TO DO:
 - THE MAINTENANCE OF THE ASSET DATABASE
 - SETTING UP A SIGNPOSTING PROJECT WITH LOCAL OFFICERS AND VOLUNTEERS
 - PLACING OF COMMUNITY NOTICEBOARDS IN STRATEGIC AREAS
 - PROMOTION OF NORTHEAST PATHFINDER WEBSITE TO ORGANISATIONS AND RESIDENTS
 - TAKING A WHOLE FAMILY APPROACH WHEN WORKING WITH RESIDENTS

- PUBLIC SPACE
 - SETTING UP AN ENVIRONMENTAL TASKFORCE TO RESPOND TO ISSUES IDENTIFIED BY LOCAL RESIDENTS
 - COMMUNITY CLEAN-UPS INVOLVING RESIDENTS AND SCHOOLS
 - ESTATE WALKABOUTS TAKING PLACE ON A MONTHLY BASIS
 - THE PLACE STANDARD EXERCISE CARRIED OUT WITH COMMUNITY GROUPS AND INDIVIDUALS
 - EDUCATING LOCAL DOG WALKERS TO BECOME GREEN DOG WALKERS, WITH THOSE WHO DO NOT COMPLY BEING ISSUED FIXED PENALTIES
 - HOLDING A COMPETITION IN LOCAL SCHOOLS TO PROVIDE SIGNAGE & POSTERS TO TACKLE BROKEN GLASS, LITTER, DOG FOULING ETC..
 - IDENTIFICATION OF FLY TIPPING SITES
 - INFORMING RESIDENTS OF NEW DEVELOPMENTS (INCLUDING HOUSING) IN AREA
 - FOSTERING PLACE ATTACHMENT BY LOCAL RESIDENTS
 - LOOKING AT DESIGNATED PARKING ON MATCH DAYS, ISSUING FIXED PENALTIES AND USE OF VACANT AND DERELICT LAND AS PARKING ON MATCH DAYS

- IMPROVE ACCESS TO KEY GOODS AND SERVICES
 - LOOKING AT THE SPREAD OF SMALL SHOPS
 - LOOK AT ROUTES OF GROCERY VANS TO ENSURE THEY ARE MEETING LOCAL DEMAND
 - LOOK AT BUS ROUTES FOR DALMARNOCK WITH A VIEW TO IMPROVING THE SERVICE
 - PROMOTION OF ONLINE SERVICES
- COMMUNITY DEVELOPMENT
 - LOOKING AT GCVS CAPACITY BUILDING TRAINING PROGRAMME (LIAISE WITH THIRD SECTOR CAPACITY BUILDING GROUP: KAREN LATTA)
 - ONGOING COMMUNITY ENGAGEMENT ACROSS COMMUNITY CENTRES
 - PROMOTION OF CAPACITY BUILDING OPPORTUNITIES ACROSS COMMUNITY CENTRES
 - PROMOTION OF LOCALITY PLAN EXERCISE AND RIGHTS OF ENGAGEMENT ACROSS KEY SITES

Community Anchor Operational Update

1	STEM Pilot
1a	Wed 3/4 – 20 Fri 5/4 - 18 Fri 12/4 - 20 Total: 58 participants
1b	3 family sessions in partnership with Glasgow Life, Glasgow Science Centre, Kelvin College and YOMO.
1c	Feedback was really positive and very clear in requesting more similar events. Plan is to try to establish a weekly STEM club, potentially at BCC after school with each partner provider taking it in turns to provide activities which would minimise resources. In discussions with partners at present. Also working with STEM team from GCC to support STEM Fest in November and get local employers involved.

2	Spring Holiday Activities Support
2a	Assisted with Barrowfield Buzz Breakfasts – total 197 breakfasts served
2b	Assisted with Barrowfield holiday activities – total 130 participants
2c	Other activities included helping with Community Clean up in Barrowfield, Mural Painting with PYP in Parkhead, and supporting BSAP as their numbers were extremely high.
2d	Shared a calendar for all activities delivered by partners throughout PDC with local communities and signposted families to encourage attendance.

3	Community Breakfasts
3a	Thu 21/2 – Parkhead Schoolhouse – 21 Thu 14/3 – BCC – 16 Fri – 22/3 – Silverdale Nursery – 16
3b	Have planned 3 x 'Communi-Tea Parties' throughout May and early June across 3 communities to focus on volunteering and getting involved with various opportunities with groups in PDC.

4	What's on Our Doorstep event
4a	Held at The Forge Shopping Centre on 27/4 19 Competition surveys completed with 12 who asked for us to remain in contact. I would estimate at least 50 local people engaged with stalls through conversation, survey etc.

5	Health & Safety
(4a)	Risk Assessments carried out for STEM, Community Breakfasts and The Forge Event.

6	Partnership working and funding support locally
6a	Created partnerships with over 50 organisations, including places of worship, nurseries and schools.
6b	Assisted with funding and continue to support and work in partnership on future plans for community gardens with Parkhead Nursery, Greenheart Growers, and Baltic Street respectively.

7	Walking Group
7a	Have facilitated a new Walking Group in partnership with Glasgow Sport. 2 sessions so far with 3 participants and 1 trained volunteer.
7b	Both Community Workers have trained a Walk Leaders.
7c	Aim of group is to visit new locations each week and will be led by volunteers and regular attendees with light touch support of TP team and Glasgow Sport.

8	Future Focus & Plans
8a	Regular Communi-Tea Parties in each community with partners
8b	Facilitating new regular Women's Group in area.
8c	Weekly Stem Club
8d	Encouraging participation in local Gardening & Growing projects as continuation of STEM focus and food inequalities (including volunteering focus)
8e	Assisting with plans for STEM fest and getting local employers involved
8f	Summer holiday activities and engagement

PDC Thriving Places (Spend Profile)	IGF	Clyde Gateway	Expenditure	Remaining Balance
	2018/19	2018/19	2018/19	2018/19
Opening Balance IGF / Clyde Gateway Budget	£55,399.00	£3,161.28		
Salary Costs Community Connector (Projected 31st March 2019)	£13,124.97	£0.00	£13,124.00	£0.00
Recruitment Costs	£2,500.00	£0.00	£2,500.00	£0.00
Management Fee- (BCC Office Costs)	£1,750.00	£0.00	£1,750.00	£0.00
Community Consultation / Asset Mapping (3 Community Events)	£20,000.00	£0.00	£20,000.00	£0.00
Barrowfield Ball (24 Weeks Only)	£4,256.00	£0.00	£4,256.00	£0.00
Community Breakfast (One per month alternating areas)	£0.00	£1,352.00	£1,037.84	£315.00
PDC Thriving Places -Community Engagement	£3,000.00	£0.00	£3,000.00	£0.00
Winterfest Support (Increased from £1,500)	£3,000.00	£0.00	£3,000.00	£0.00
Safe Play / Small Scale Environmental Projects	£7,768.03	£1,809.28	£7,768.03	£1,810.00
TOTAL Projected Spend	£55,399.00	£3,161.28	£56,435.87	£2,125.00

Notes
Parkhead Nursery
Baltic Street
Camlachie Clean Up
Greenhearted Growers
Total

PDC Thriving Places (Spend Profile)	IGF	Clyde Gateway	Expenditure	Remaining Balance
	2019/20	2019/20	2019/20	2019/20
Opening Balance IGF / Clyde Gateway Budget	£42,000.00	£19,625.00		
Salary Costs Community Connector (Until 31st March 2020)	£35,108.18	£0.00	£0.00	£35,108.18
Training Costs	£1,000.00	£0.00	£0.00	£1,000.00
Management Fee- (BCC Office Costs)	£1,751.00	£0.00	£0.00	£1,751.00
Community Breakfast (One per month alternating areas)	£1,140.82	£0.00	£0.00	£1,140.82
PDC Thriving Places -Community Engagement	£3,000.00	£0.00	£0.00	£3,000.00
Generic Projects or Initiatives	£0.00	£19,625.00	£0.00	£19,625.00
TOTAL Projected Spend	£42,000.00	£19,625.00	£0.00	£61,625.00

Notes	
Total	

A stylized, hand-drawn illustration of Glasgow city buildings. The style is reminiscent of a child's drawing or a folk-art style. The buildings are drawn with thick black outlines and filled with various colors like yellow, orange, and brown. The sky is a mix of blue and green, with some white clouds. The overall feel is artistic and local.

Dream your own East.

Adult Health and Well Being Survey

Parkhead/Dalmarnock/Camlachie

Nichola Brown

Health Improvement Manager

Glasgow City Health and Social Care Partnership

<https://www.stor.scot.nhs.uk/handle/11289/579940>

05/04/19

NHSGGC Health & Wellbeing Surveys

- Three yearly since 1999, six waves, face to face interview in the home
- Reported trends since 2008 and national survey data reported for the first time
- Residents over 16 years of age, stratified random sample of households, representative and weighted
- Data linkage; 61% agreed for data linkage to CHI

Topics include

- Perceptions of health, behaviours
- Social health and capital
- Financial well-being
- Attitudes and perceptions of services/life

Core questions over time, changes in 2018

- Int. Food Insecurity Scale included
- Loneliness
- Alcohol AUDIT scores

Scale

- Total Sample Size for Glasgow 4,520
25% with children under 16yrs
41% from SIMD 15% most deprived

• Localities

North East Sector	1673
North West Sector	1146
South Sector	1701

• Thriving places and comparator

Greater Gorbals	538
Parkhead/Dalmarnock	537
Ruchill/Possilpark	541
Govanhill	542
(Ruchazie/Garthamlock)	534

Perceptions of Health

Perceptions of physical health

91% of under 35s felt positively about their physical health but only 52% of those over 65

30% have a long term condition that affects their daily life , 90% are over 35

Perception of mental/emotional wellbeing

Highest in under 35s

Feeling in control of decisions affecting life

Lower in PDC (64%) than Glasgow City (72%)

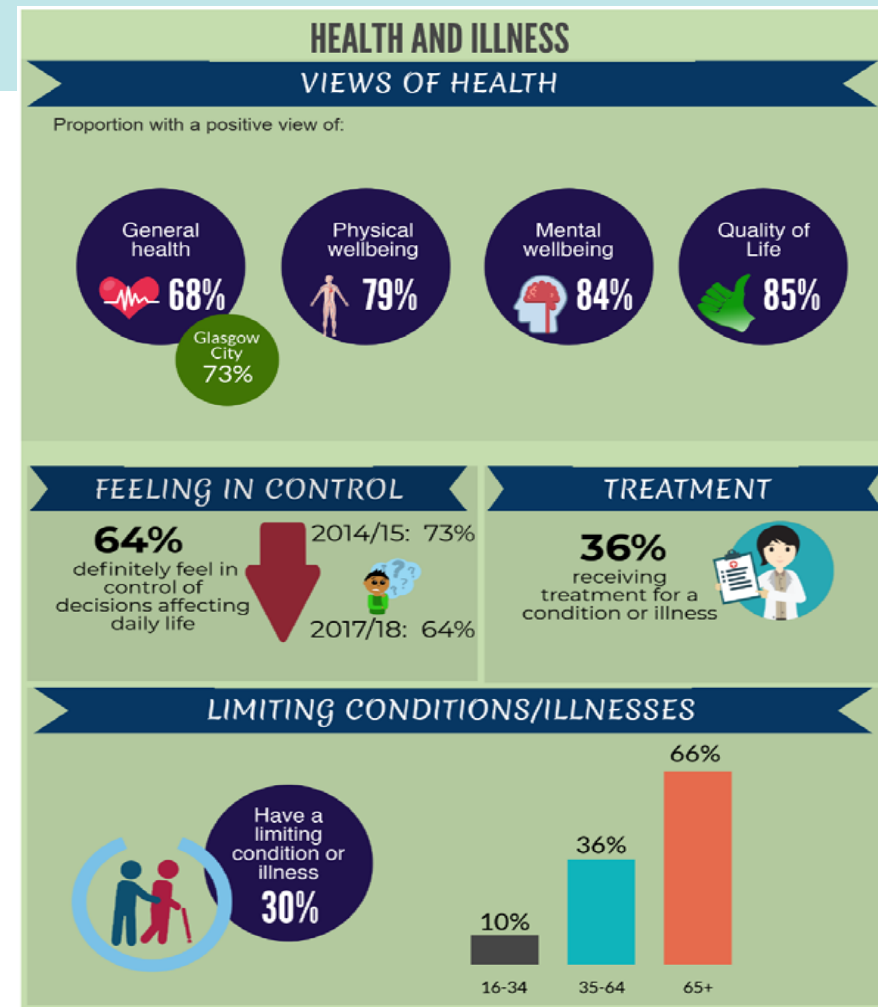
Lower in men (58%) than women (69%)

Decrease since 2014/5

Quality of life

No significant change since 2014/5

Highest in under 35s (93%)



Health behaviours

Smoking

Biggest drop in city for both prevalence and exposure to second hand smoke

Alcohol

42% never drink alcohol

Men and under 35s most likely to binge drink however lower than Glasgow 45% v 62%

Diet

Increase in consuming 5 or more portions of fruit/veg from 21% to 31%

More likely to consume cakes/biscuits, crisps, sweets and sugary drinks-prevalence higher in younger age group

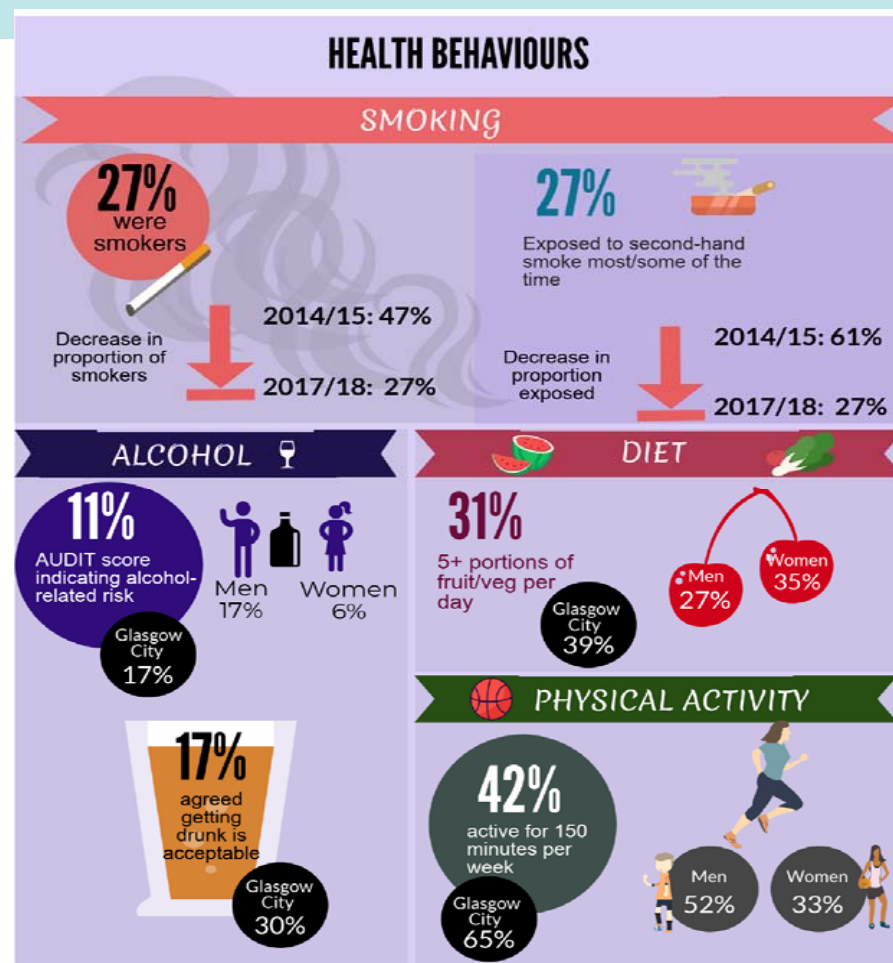
Less likely to consume shop bought coffee

Women more likely to consume sugary drinks, men more likely to consumes pies, ready meals and takeaways

Physical activity

Higher in under 35s and higher in men

lower sedentary behaviour 4.5hrs PDC, 5.4 hours Glasgow City



Tobacco Smoking

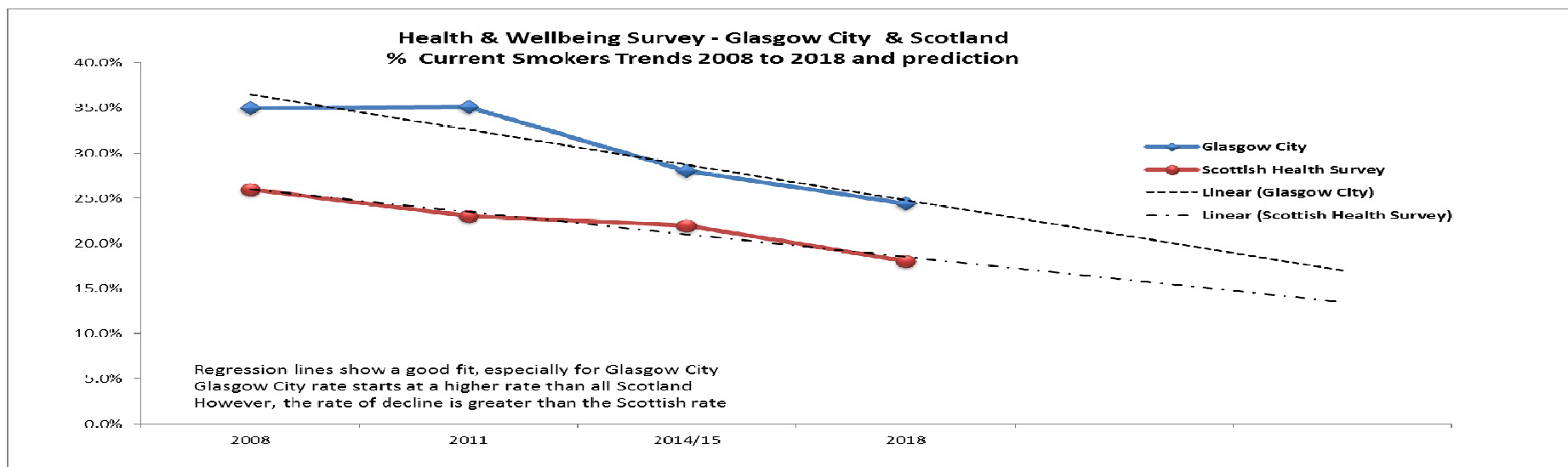
	Smokers		Exposed to Second Hand Smoke	
	2018	Change	2018	Change
Glasgow City	24%	-4%	30%	-9%
Parkhead/Dalmarnock	27%	-18%	27%	-34%
Ruchill/Possilpark	31%	-5%	36%	-13%
Greater Gorbals	26%	-8%	26%	-13%
Govanhill	25%	-8%	30%	-8%
Garthamlock/Ruchazie	26%	-14%	34%	-14%

Mixed pattern

Green = significant change in 'wrong' direction

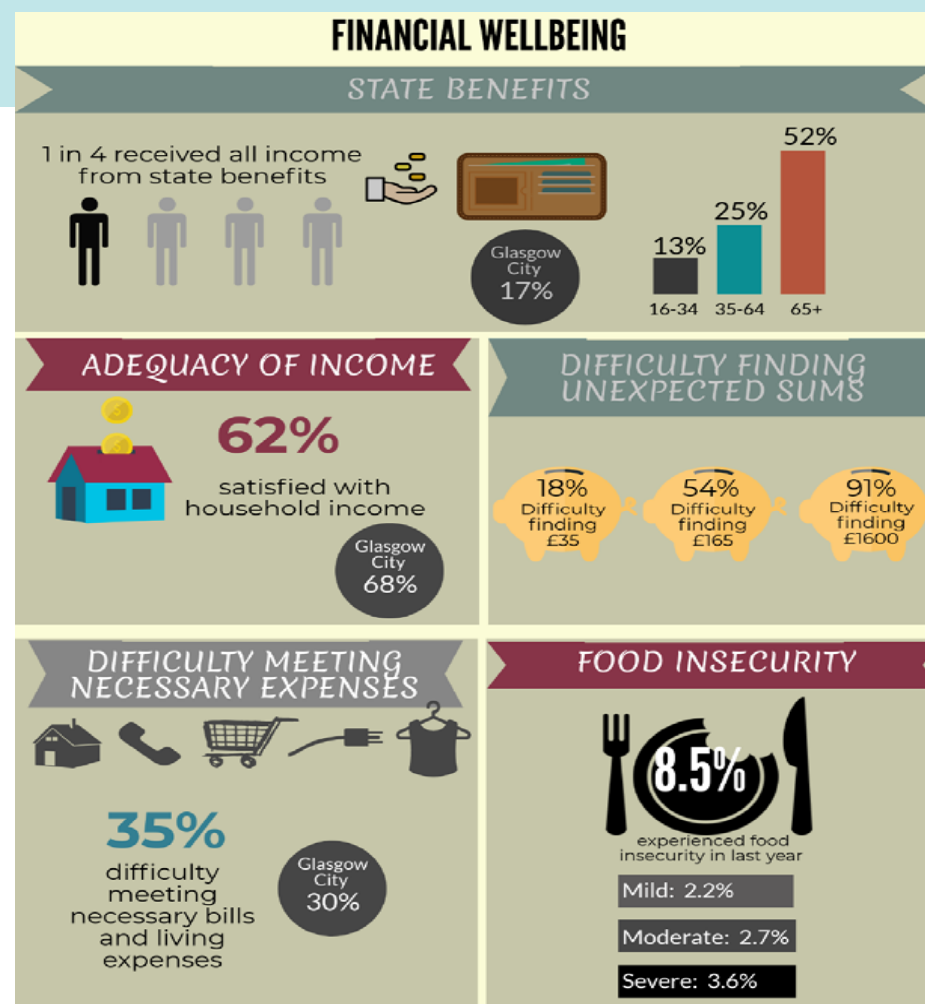
Yellow = significant change in 'right' direction

No fill = no significant change

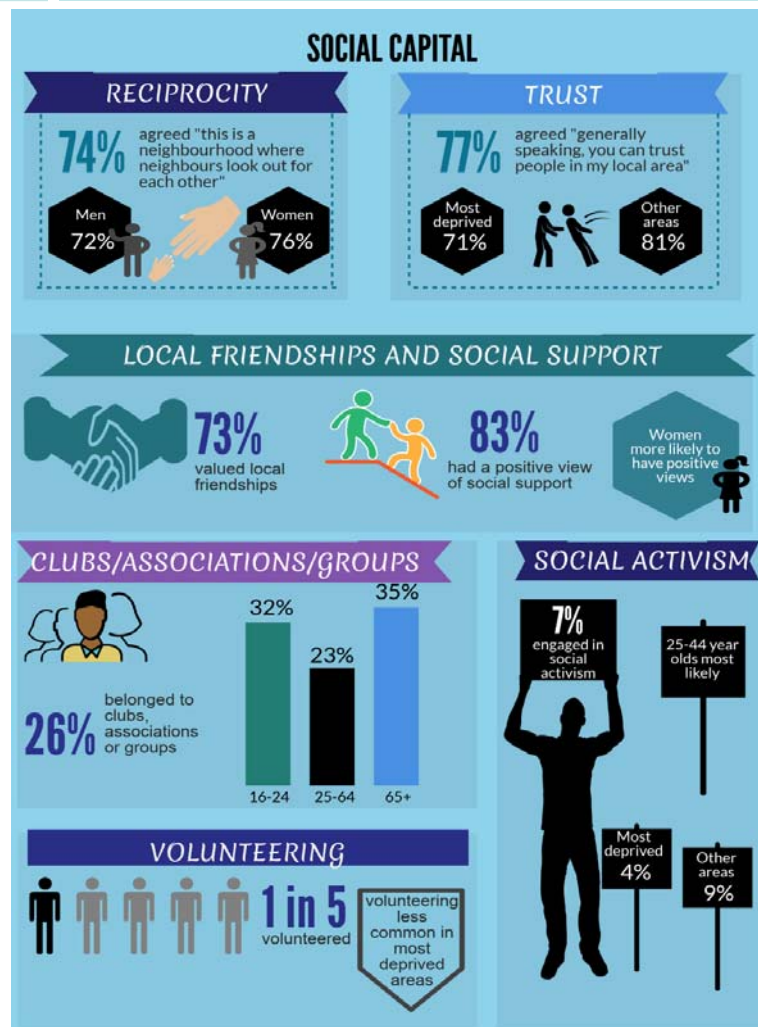


Financial Wellbeing

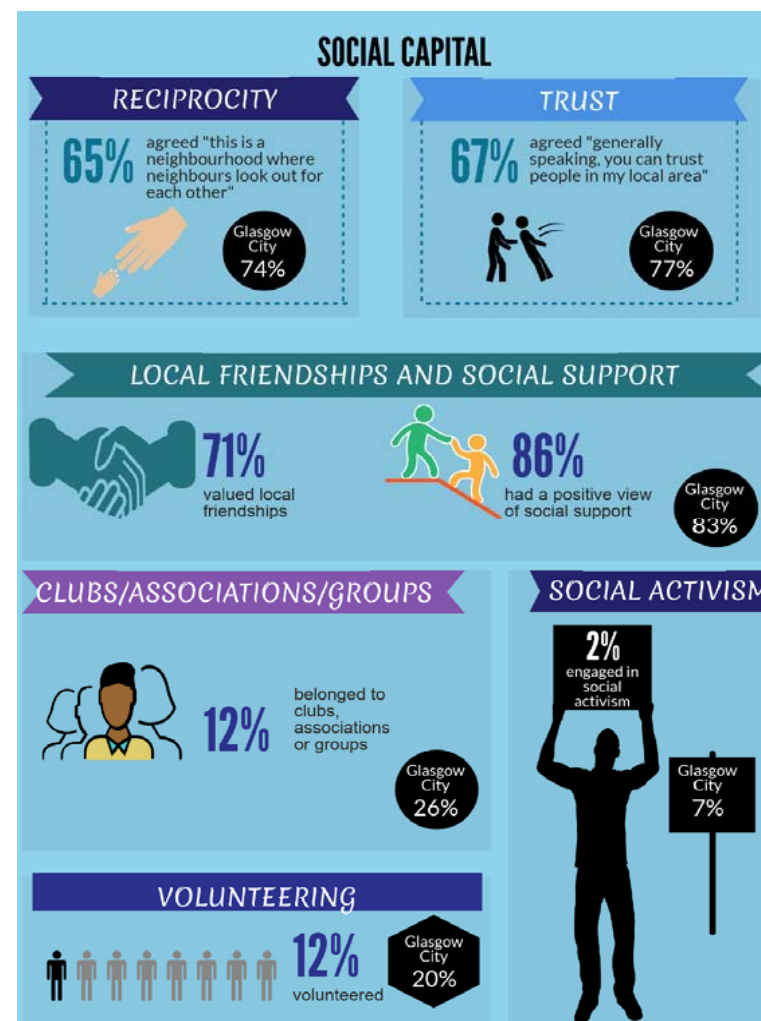
- Income from State Benefit
- Adequacy of Income
- Views of poverty
- Difficulty meeting the cost of specific expenses
- Difficulty finding unexpected sums
- Credit and Store Cards
- Food Insecurities
- Gambling



Glasgow City



Parkhead, Dalmarnock, Camlachie



Thriving Places 2018 & Change Since 2014/15

	Isolated from Family & Friends		Belong to Local Area		Feels Valued		Can Influence Decisions		Feels Safe Using Public Transport		Feels Safe Walking Alone	
	2018	Change	2018	Change	2018	Change	2018	Change	2018	Change	2018	Change
Glasgow City	15%	5%	76%	-1%	61%	-2%	70%	-4%	90%	2%	75%	8%
Parkhead/Dalmarnock	12%	2%	66%	-5%	53%	-10%	65%	-4%	80%	-6%	67%	14%
Ruchill/Possilpark	19%	4%	71%	-2%	58%	-2%	73%	9%	88%	-1%	65%	11%
Greater Gorbals	18%	4%	80%	11%	69%	31%	74%	11%	92%	3%	74%	11%
Govanhill	13%	6%	73%	11%	62%	9%	70%	8%	83%	-1%	52%	-4%
Garthamlock/Ruchazie	14%	5%	81%	-4%	64%	-12%	71%	-14%	89%	-5%	74%	5%

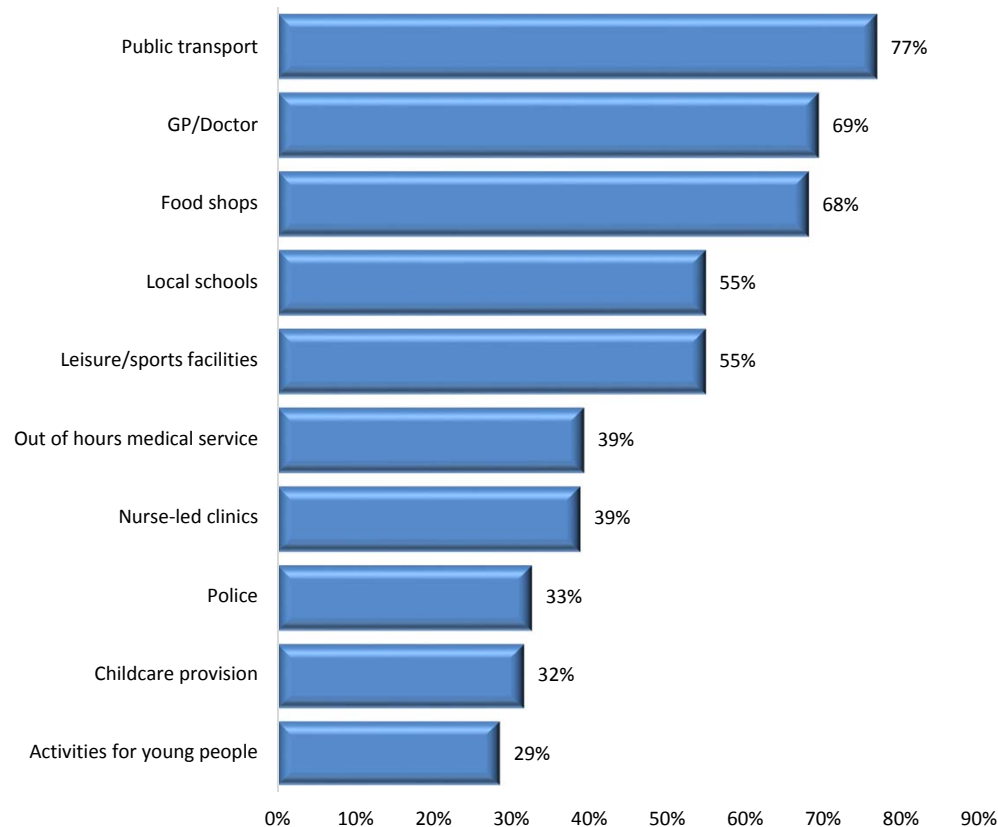
Mixed pattern

Green = significant change in 'wrong' direction

Yellow = significant change in 'right' direction

No fill = no significant change

Satisfaction with Services



• *Comparison with Glasgow City*

Those in Parkhead/Dalmarnock were less likely to have a positive perception of:

- GP/doctor (69% Vs 77%)
- local schools (55% Vs 73%)
- out of hours medical service (39% Vs 62%)
- nurse-led clinics (39% Vs 66%)
- police (33% Vs 50%)
- childcare provision (32% Vs 44%)
- activities for young people (29% Vs 37%)

However, those in Parkhead/Dalmarnock were more likely to have a positive perception of:

- leisure/sports facilities (55% Vs 48%)

•